

The JAMPRO JCR Broadband Corner Reflector Antenna

www.kappaltda.com

The JAMPRO JCR antenna has been one of JAMPRO's most successful antennas, providing long term quality service even in the harshest environments. The flexibility of the JCR allows broadband multi-channel operation for FM, VHF and UHF applications. The unique design of this antenna can be configured to give a station varying levels of vertically polarized signal, from small amounts of elliptical polarization to full circular polarization. The flexibility of this design could allow the station to have different patterns for vertical and horizontal polarization. This highly efficient antenna provides excellent directional capabilities to give a variety of azimuth patterns.

Designed for Bands I, II, IV and V

High Gain Element (8.0 dB) for Maximum
Gain per Given Aperture

Custom Azimuth and Elevation Pattern
Design

High Bandwidth for Multiple Television
Channel Use

Rugged Mechanical Construction
and Mounting

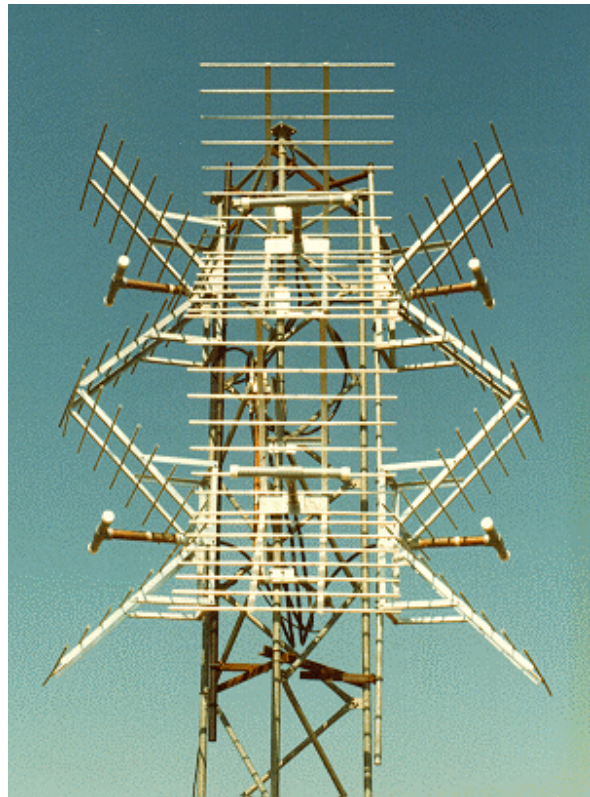
Excellent Pattern Prediction and
Control

Electrical Beam Tilt and Null Fill
Standard

High Power Design - 20 KW per Element

Directional Patterns Available

Optional Radomes Available



JAMPRO JCR CORNER REFLECTOR ANTENNA						
# Bays	Panels per Bay	Gain (times)	Gain (dB)	Height (ft.)	Weight (lbs.)	Windload (lbs.)
1	1	6.3	8	8	389	792
	2	3.1	5		778	1425
	3	2.1	3.2		1167	1980
	4	1.6	2		1556	2455
2	1	12.6	11	18	778	1584
	2	6.3	8		1566	2851
	3	4.2	6.2		2334	3959
	4	3.1	5		3112	4909
4	1	25.7	14.1	38	1556	3167
	2	12.9	11.1		3112	5701
	3	8.5	9.3		4668	7918
	4	6.5	8.1		6224	9819
6	1	38.9	15.9	58	2334	4751
	2	24.5	13.9		4668	8552
	3	12.9	11.1		7002	11877
	4	9.8	9.9		9336	14728
8	1	51.3	17.1	78	3112	6335
	2	25.7	14.1		6224	11402
	3	16.9	12.3		9336	15837
	4	12.9	11.3		12448	19637

Notes:

- Weights and wind loads include standard mounting brackets at 98 MHz.
- Wind load ratings are based on 50/33 PSF at 100 mph.
- All inputs EIA flange, female.
- Power and dB gains are typical for horizontal and vertical components.
- Antennas supplied with standard mounting brackets for tower leg size up to 3". Special mounting brackets available.
- Other combinations of EIA input and power rating available.
- Free space azimuth circularity is +/- 2 dB.
- Weights and wind loads calculated without cables or power dividers.

Options

Options available include FCC-Directionalization, Pattern Measurement Service, beam tilt, null fill, and special mounting brackets.

Non-ionizing Radiation

Since many factors contribute to a station's compliance with the FCC exposure guidelines for radio frequency radiation, JAMPRO Antennas, Inc. cannot accept any responsibility in this matter. The station must examine and determine its status based on each individual situation.

All specifications are subject to change.